



# NCS Nurse Call System

Bridging Communications & Care Delivery Services



# Hybrex Nurse Call System

Hybrex's Nurse Call System (NCS) is designed to streamline communication between patient and caregiver by getting critical needs information to the right staff at the right time. This results in improved quality of care, patient satisfaction and reduced response times to deliver valuable and needed services to patients in any health care facility.

The Hybrex Nurse Call System is an integrated communications platform that participates in

“real time” workflow management mode along with your operations to deliver best in class services to your patients. The solution offers an array of patient room devices, master console monitoring head nurse stations, corridor lights for easy identification of patient needs as well as scrolling LED information panels. The Nurse Call System can also get critical information to mobile devices such as smart phones, pagers and cordless telephone sets.

## The Hybrex Nurse Call System Offers

- A single integrated platform that is scalable and can offer both Nurse Call capabilities as well as a complete communication system. Multiple wings and systems can co-exist in the same platform saving health care providers thousands of dollars. Systems can be configured for small clinics or large scale hospitals over 1,000 beds.
- Private and semi-private patient room configuration options for cost savings and shared services.....for example 2 beds sharing the same bathroom.
- Improved staff response times for the delivery of patient care. Patient requests get routed immediately to the places where you need them to go. Multiple master monitoring consoles can be signaled along with specific reason for the call.
- The flexibility to call forward the master monitoring console to other devices for night shift or staff change reasons.
- Simultaneously ring DECT handsets of mobile nurses and doctors.
- Ring and display patient room number on mobile SIP based Wi-Fi phones and smart phones with soft clients enabled.
- Real time digital information can be displayed on scrolling LED panels that can be read and responded to easily by caregivers.
- An “event” monitor that displays and records all activity and provides an overview of response performance.
- Access Control – Health care facilities may deploy Hybrex Access Control panels with RFID sensors to protect secure areas such as medications. You may assign security codes or access cards only to authorized personnel for entry into restricted areas.
- Single Button Intercom – You may equip the system to provide a “hotline” in a lobby area and route calls to the appropriate office staff.
- The affordability and efficiency of single pair wiring from the main controller to each patient room.



## LCD Display Master Monitoring Console



- Desktop master monitoring console with easy to read LCD display
- Master station can simultaneously display more than 66 bedside call statuses.
- The LED indicators on the master station can not only display bedside call status but allow staff to directly answer a patient call.
- Handsfree crystal clear full duplex audio with patient rooms.
- Master station can make an emergency voice announcement (Page) to any single patient room, specific area or all patients simultaneously.
- Staff can set the inpatient's name on the system at their admission. When the patient sends a call, nurse can easily recognize it from the room number and name shown on the phone LCD and system.
- Single-button intercom Access Control Phone can be installed at the common area or corridor. When ACP sends a call to nurse station, the master station displays the location of ACP.
- Environment Monitor allows the nurse station to listen to the activities that occur in special wards.



## Nurse/Doctor Presence (Including Cancel Button)

- When a nurse or staff presses the nurse/doctor PRESENCE button upon entering a patient room, the other staff can quickly recognize the location of the orderly nurse/doctor from LED indicators on the master station and corridor lights.
- The nurse or staff presses the CANCEL button on the panel to cancel all LED indicator and corridor light upon leaving the patient room.



## Call Forward (Local/Remote Nurse Station)

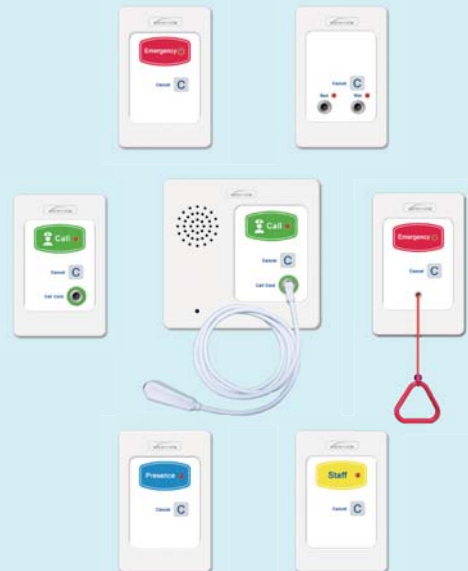
- Master monitoring console can directly forward patient calls to other on duty caregivers or to staff's DECT or Wi-Fi phone.

## Multi-Color Corridor Lighting Control Module

- Activating single-/three-color corridor lights
- Color Options include:
  - ✓ Normal call (steady green)
  - ✓ Emergency call (flashing red)
  - ✓ Nurse/Doctor presence (steady blue)

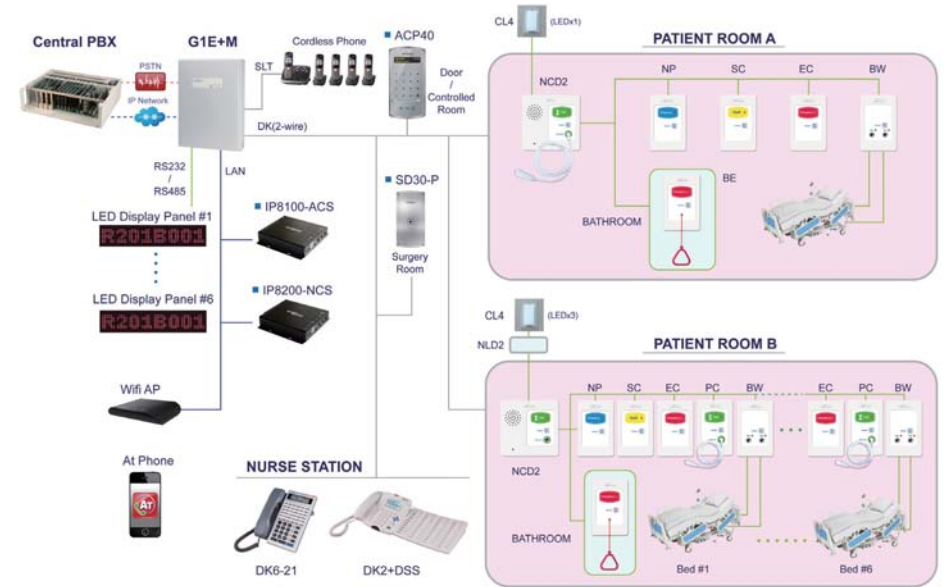
## Bedside Call Panel / Nurse Call Device (NCD2)

- Bedside Call Panel / Nurse Call Device is the central room station offering the following capabilities:
  - ✓ Call button with LED indicator, CANCEL button and call cord interface
  - ✓ Built -in speaker, hidden microphone and full duplex intercom
  - ✓ Automatic cord detection and alarm
- The Bedside Call Panel / Nurse Call Device is the primary interface for the following nurse call panels:
  - ✓ Bathroom Emergency Call Panel
  - ✓ Bathroom Emergency Call Panel with pull cord
  - ✓ Patient Call Panel with call cord
  - ✓ Nurse / Doctor Presence Panel
  - ✓ Staff Assist Call Panel
  - ✓ Bed Exist & Wet Detection Panel



## Corridor LED Display Panel

- When bed calls are placed, corridor display and master station will display multiple bed call numbers simultaneously.
- Time & Date is displayed while corridor LED display is in standby mode.
- Custom message can be displayed in idle mode such as Wing and Floor or any location information you choose.



## Voice Announcement / Paging

- A pre-recorded voice or live announcement for emergencies or disasters can be scheduled to periodically deliver or manually from the master station to any specific areas or the whole area.

## Call Recording

- Automatic call recording is available and an option. You may record calls to and from patients and store them on a network attached storage device on your network for archiving purposes and later review as needed.

## Emergency Response Services

- You may pre record an evacuation message or emergency message and at the push of a button have that message played/paged throughout various devices in your facility.
- You may designate special areas where staff can push a single button that will ring Operators indicating an emergency request in that area.

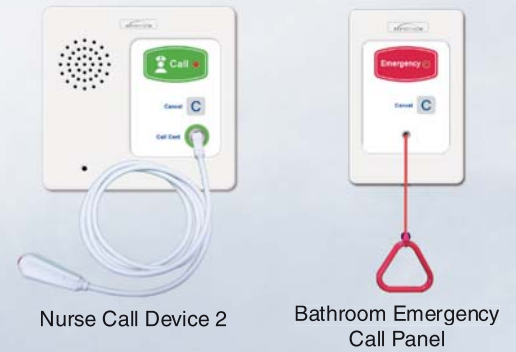
## Feature & Specifications

| Bedside Services                | G1E/M    | GDS      |
|---------------------------------|----------|----------|
| Call Cord Communication         | ✓        | ✓        |
| Full Duplex Handfree Operation  | ✓        | ✓        |
| Room Monitor Capability         | ✓        | ✓        |
| Private & Semi Private Rooms    | ✓        | ✓        |
| Single Color Corridor Light     | ✓        | ✓        |
| Multi Color Corridor Light      | Optional | Optional |
| Bed Wet / Exit Panel            | ✓        | ✓        |
| Emergency Call Panel            | ✓        | ✓        |
| Patient Call Panel              | ✓        | ✓        |
| Bathroom Emergency Call Panel   | ✓        | ✓        |
| Doctor/Nurse Present Call Panel | ✓        | ✓        |
| Staff Call Panel                | ✓        | ✓        |
| Nite Lite Illumination          | ✓        | ✓        |
| Call Recording                  | Optional | Optional |

| Nurse Operations                  | G1E/M | GDS |
|-----------------------------------|-------|-----|
| Master Console Monitoring Station | ✓     | ✓   |
| Supports Multiple Stations        | ✓     | ✓   |
| Caller ID                         | ✓     | ✓   |
| Patient Call Reason               | ✓     | ✓   |
| Call Forward                      | ✓     | ✓   |
| Day / Night Mode Routing          | ✓     | ✓   |
| Wireless Phones Supported         | ✓     | ✓   |
| Patient Room Caller ID            | ✓     | ✓   |
| Large LED Scrolling Display       | ✓     | ✓   |
| Single Side                       | ✓     | ✓   |
| Both Side                         | ✓     | ✓   |
| Paging                            |       |     |
| All Page                          | ✓     | ✓   |
| Zone Page                         | ✓     | ✓   |

| Capacities & Specifications | G1E/M        | GDS          |
|-----------------------------|--------------|--------------|
| Patient Rooms Supported     | Up to 24     | 1,000 Plus   |
| Nurse Call Device Wiring    | Twisted Pair | Twisted Pair |
| Nurse Call Panel Wiring     | RS-485       | RS-485       |
| Power Requirement           | 120/240 VAC  | 120/240 VAC  |
| Battery Back Up Capable     | ✓            | ✓            |
| UPS Back Up Compatible      | ✓            | ✓            |
| VoIP Capable                | ✓            | ✓            |

| Administration                      | G1E/M    | GDS      |
|-------------------------------------|----------|----------|
| On Site Administration (LAN)        | ✓        | ✓        |
| Remote System Administration        | ✓        | ✓        |
| Nurse Call Standalone System        | ✓        | ✓        |
| Dual PABX / Nurse Call System       | ✓        | ✓        |
| Interface to Other PABX             | ✓        | ✓        |
| Activity Event Monitoring           | ✓        | ✓        |
| Call Recording Archiving Capability | Optional | Optional |
| Secure Access Control Devices       | Optional | Optional |
| Emergency Evacuation Page           | Optional | Optional |
| Single Button Emergency Call        | ✓        | ✓        |



Nurse Call Device 2

Bathroom Emergency Call Panel



Patient Call Panel

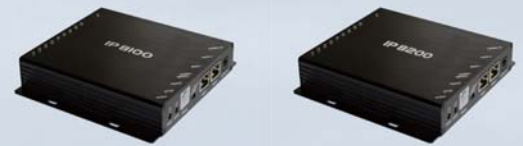
Emergency Call Panel

Bed Wet / Exit Panel



Nurse Presence Panel

Staff Call Panel



IP8100-ACS

IP8200-NCS



Corridor Light

SD30

ACP40



GDS Cabinet



LED Display Panel

### Auto Telecom Company Limited

10F, No. 3, Lane 16, Sec. 2, Sichuan Rd.,  
Banqiao Dist., New Taipei City 220, Taiwan  
Tel/FAX : +886-2-8966-1356 / +886-2-8966-5764  
Web : www.hybrex.com

### Auto Telecom (Australia) Pty. Ltd.

Unit 7, 3 Gibbes Street, Chatswood, NSW 2067  
Tel/FAX : +61 2 94150100 / +61 2 94176877  
Web : www.hybrex.com.au  
E-mail : enquiry@hybrex.com.au

### Auto Telecom New Zealand Ltd.

Unit i, 55 Druces Rd., Manukau City, Auckland, New Zealand  
Tel/FAX : +64-9-260-4009 / +64-9-263-7373  
Web : www.hybrex.co.nz  
E-mail : orders@hybrex.co.nz



DK2-21+DSS



DK6-21+DSS